

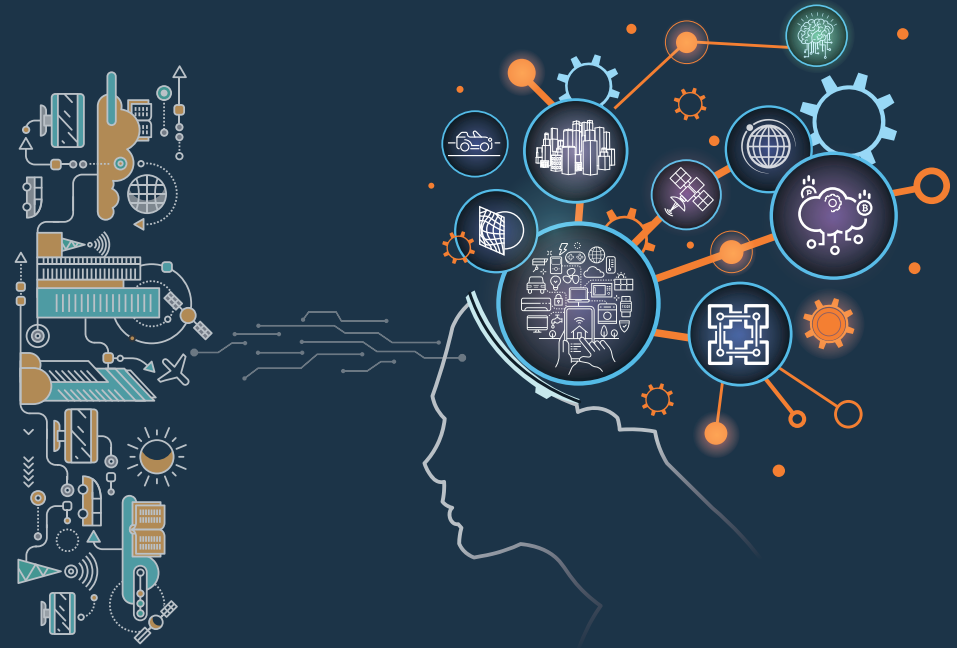
2018 ICGIS Program



Time	Program
09:30~10:00	Registration 등록
10:00~10:10	Opening Remarks President of KRIHS 개회사 국토연구원장 Congratulatory Address Director General of Spatial Information Policy Bureau at MOLIT 축사 국토정보정책관
Session 1: What is Geospatial AI 세션 1 : 공간정보 기반 인공지능	
10:10~10:40	Keynote Speech 1 "Place in Geographic Information Science" / Stephan Winter, Professor, The University of Melbourne 기조연설 1 "공간정보 과학기술의 현재" / 스테판 윈터, 호주 멜번대학 교수
10:40~11:10	"New Approaches to Space-Time Analytics of Human Dynamics" / May Yuan, Professor, The University of Texas at Dallas "휴먼 다이내믹스의 시공간 패턴 분석을 위한 새로운 접근방법" / 메이 유안, 텍사스(달라스) 대학 교수
11:10~11:40	"Geo AI for Human Life" / Kyoung-Jun Lee, Professor, Kyung Hee University "인공지능과 공간정보를 융합한 새로운 비즈니스" / 이경전, 벤플대표, 경희대 교수
11:40~13:30	Lunch 점심식사
Session 2 : New and Smart Geospatial Information Industries with AI 세션 2 : 인공지능을 융합한 새로운 도전과 산업진흥	
13:30~14:00	Keynote Speech 2 "Geo AI for Smart New Industries" / Brett Dixon, General Manager, Asia Pacific at ESRI 기조연설 2 "신산업 창출을 위한 Geo AI의 역할" / 브레트 디kson, ESRI 아시아태평양지부 총괄
14:00~14:30	"AI for Smart Mobility" / Seung-Il You, Head of Datalab, Kakao Mobility. "스마트 모빌리티를 위한 AI" / 유승일, 카카오모빌리티 데이터랩장
14:30~15:00	"Geospatial Information and Machine Learning Application in Japan" / Yoshiki Ogawa, Project Researcher, The University of Toyko "공간정보와 머신러닝 -일본사례를 중심으로-" / 오사키 오가와, 도쿄대학 생산기술연구소 특임연구원
15:00~15:30	"Cloud-powered Machine Learnings on Geospatial Services - From the Earth to Your Home" / Channy Yun, Tech Evangelist, Amazon Web Service Korea "공간정보 서비스를 위한 클라우드 기반 머신러닝 활용" / 윤석찬, AWS 테크에반젤리스트
15:30~16:00	"A Deep Learning Approach for Simulating Urban Development" / Donghan Kim, Research Fellow, KRIHS "딥러닝을 적용한 도시시뮬레이션" / 김동한, 국토연구원 연구위원
16:00~16:20	Coffee break 휴식
16:20~17:30	Round-Table Meeting / Moderator : Min-Hwa Lee, Chairman, KCERN 종합토론 / 좌장 : 이민화, 창조경제연구회 이사장
Closing Remarks 폐회	

International Conference on Geospatial Information Science
2018 ICGIS
공간정보 국제컨퍼런스

Smart Geospatial Expo 2018
2018 스마트국토엑스포



인공지능과 공간정보가 함께하는 미래사회

The Future of Geospatial AI

2018. 9. 13(THU.) 10:00~17:30

코엑스 컨퍼런스룸(남) 308호

COEX Conference Room(South) 308

주최 국토연구원
KRIHS

주관 국토교통부
Ministry of Land,
Infrastructure and Transport

Keynote & Speakers



> Keynote Speaker

Stephan Winter | The University of Melbourne

Stephan Winter is Professor for Spatial Information Science in the Department of Infrastructure Engineering at The University of Melbourne. His areas of research interest include intelligent transportation systems and computational transportation science. He has also worked in the fields of mobile geosensor networks, smart cities as well as spatial cognitive engineering, spatial cognition spatial data mining and geographic information retrieval.

- 2013~ Professor, Geomatics Department of Infrastructure Engineering, The University of Melbourne
- 2007~2012 Associate Professor, Department of Geomatics, The University of Melbourne
- 2005 Visiting Faculty, University of Muenster
- 2003 Visiting Faculty, University of Redlands
- 2002~2003 Visiting Faculty, Carinthia Tech Institute



> Keynote Speaker

Brett Dixon | Asia Pacific at ESRI

Brett has been working in the geospatial intelligence realm for almost two decades. He's passionate about using GIS and geomatics to assist in national security, emergency and recovery, and disaster response. Now, he advises many agencies throughout the Asia Pacific region, leveraging his GIS skills and national security knowledge to stay ahead of geospatial trends and challenges.

- 2017~ Advisory Board Member, Geospatial Media and Communications
- 2016~ General Manager for Asia Pacific, Esri
- 2007~2012 Owner Principal, Hunter Seeker Pty Ltd
- 2009~2010 Professional Services Manager of National Government, Canberra, Australia
- 2005~2007 Professional Services Lead – ACT, Esri Australia
- 2003~2005 GIS Manager, Energy Australia



> Speaker

May Yuan | The University of Texas at Dallas

May Yuan is Ashbel Smith Professor of Geospatial Information Sciences in the School of Economic, Political, and Policy Sciences at the University of Texas at Dallas. She studies temporal GIS and its applications to geographic dynamics. Over the last 20 years, her research has developed new approaches to represent geographic processes and events in GIS databases to support space-time query, analytics and knowledge discovery.

- 2014~ Professor, The University of Texas at Dallas
- 2011~2012 President of University Consortium for GIS
- 2009~2014 Mapping Science Committee at the National Research Council
- 1994~2014 Brandt Professor and Edith Kinney Gaylord Presidential Professor and Director of Center for Spatial Analysis at the University of Oklahoma



> Speaker

Yoshiki Ogawa | Project Researcher, The University of Tokyo

Yoshiki Ogawa is Project Researcher for Spatial Information Science and Institute of Industrial Science at The University of Tokyo. His area of research is Big data analysis of GIS data and developing integrated simulation system of gigantic earthquake and tsunami disasters. He utilizes data from mobile phones GPS and various GIS data to observe and measure people phenomena in our urban/rural regions and develop and apply simulation models to understand the past and predict the future disaster damage by integrated simulation.

- 2016~ Project Researcher, Center for Spatial Information Science and Institute of Industrial Science, The University of Tokyo
- 2016 Ph.D, Graduate School of Frontier Sciences, The University of Tokyo
- 2013 MS, Graduate School of Frontier Sciences, The University of Tokyo



> Speaker

Kyoung-Jun Lee | Benple Inc., Kyung Hee University

Kyoung Jun Lee is Professor of Management Information Systems at the Business School at Kyung Hee University. He was a member of the Government 3.0 Committee and held the position of Information Sharing and Collaboration Committee Chair. He has been also working as a head of IoT/IoE Division of the public-private partnership for e-Government.

- 2017~ President, Korea Intelligent Information Systems Society
- 2015~ Director, ICEC(International Center for Electronic Commerce)
- 2014~ Director, Humanitas Big Data Research Center
- 2013~ Founder&Executive officer, Allwinware
- 2010~ Founder&CEO, Benple Inc.
- 2003~ Professor, Business School at Kyung Hee University



> Speaker

Seung-II You | Kakao Mobility Data Lab

Dr. Seungil You is the head of datalab at Kakao Mobility, where he is leading the research effort for building an AI system that leverages spatiotemporal data. Currently, his main work is developing AI systems that can operate at scale and improve Kakao Mobility's core services. He also wrote many papers in machine learning, control and decision, and communication.

- 2018 ~ Head of datalab, Kakao Mobility, Pangyo, South Korea
- 2015 ~ 2018 Senior software engineer, Google Research, Mountain View, U.S.
- 2015 PhD in control and dynamical systems, California institute of technology, Pasadena, U.S.
- 2011 BS in electrical engineering, Seoul national university, Seoul, South Korea



> Speaker

Channy Yun | Amazon Web Service Korea

Channy Yun is a Principal Technical Evangelist at Amazon Web Services and works with Korean developers to enable them to use AWS cloud services. He has over 20 years of experience in various information systems such as geospatial, content management, e-commerce platform, and building their large-scale API systems such Daum Search and Maps APIs. Now he has special interests in cloud native architectures such as serverless, container, mobile/IoT, and machine learning.

- 2014- Technical Evangelist at Amazon Web Services Korea
- 2007-2014 Adjust Professor of Dept. Computer Engineering at Jeju National University
- 2004-2014 Team Manager of DNA Lab at Daum Communications
- 1996-2003 CTO of Nine4u



> Speaker

Donghan Kim | Korea Research Institute for Human Settlements

Donghan Kim is a research fellow at the Geospatial Analytics Center in the Korea Research Institute for Human Settlements. His research focus is on developing and applying urban and regional models for planning policy. His recent modelling work covers the following themes: urban sprawl and growth, urban decay and regeneration, urban gentrification and segregation, firm dynamics and employment location, regional disparity and balanced development, etc.

- 2001~2008, 2012~present. Associate Research Fellow and Research Fellow, Korea Research Institute for Human Settlements
- 2008~2012. Ph.D. Bartlett School of Planning, Doctoral Researcher at the Centre for Advanced Spatial Analysis, University College London, UK
- 1998~2000. MA. College of Urban Planning and Policy, Graduate Research Assistant at the Great Cities Urban Data Visualization Lab. University of Illinois, Chicago, USA



> Moderator

Min-Hwa Lee | KCERN

Min-Hwa Lee established S. Korea's first venture company, Medison Co., Ltd. in 1985, which has grown into a global medical equipment company. He paved the way for venture companies to flourish in S. Korea by enacting special law on venture companies, establishing KOSDAQ, and initiating various venture policies. In 2013, he has established the Creative Economy Research Society to plan the civilian future of S. Korea and is currently still serving as chairman.

- 2013~ Chairman, KCERN(Korea Creative Economy Research Network)
- 2009~ Professor, KAIST(Korea Advanced Institute of Science and Technology)
- 2008~ Chairman, Eurasian Network